

# **SLOUGH MULTIFUEL EXTENSION PROJECT**

Planning Inspectorate Ref: EN010129

## **The Slough Multifuel Extension Order**

**Land at 342 Edinburgh Avenue, Slough Trading Estate, Slough**

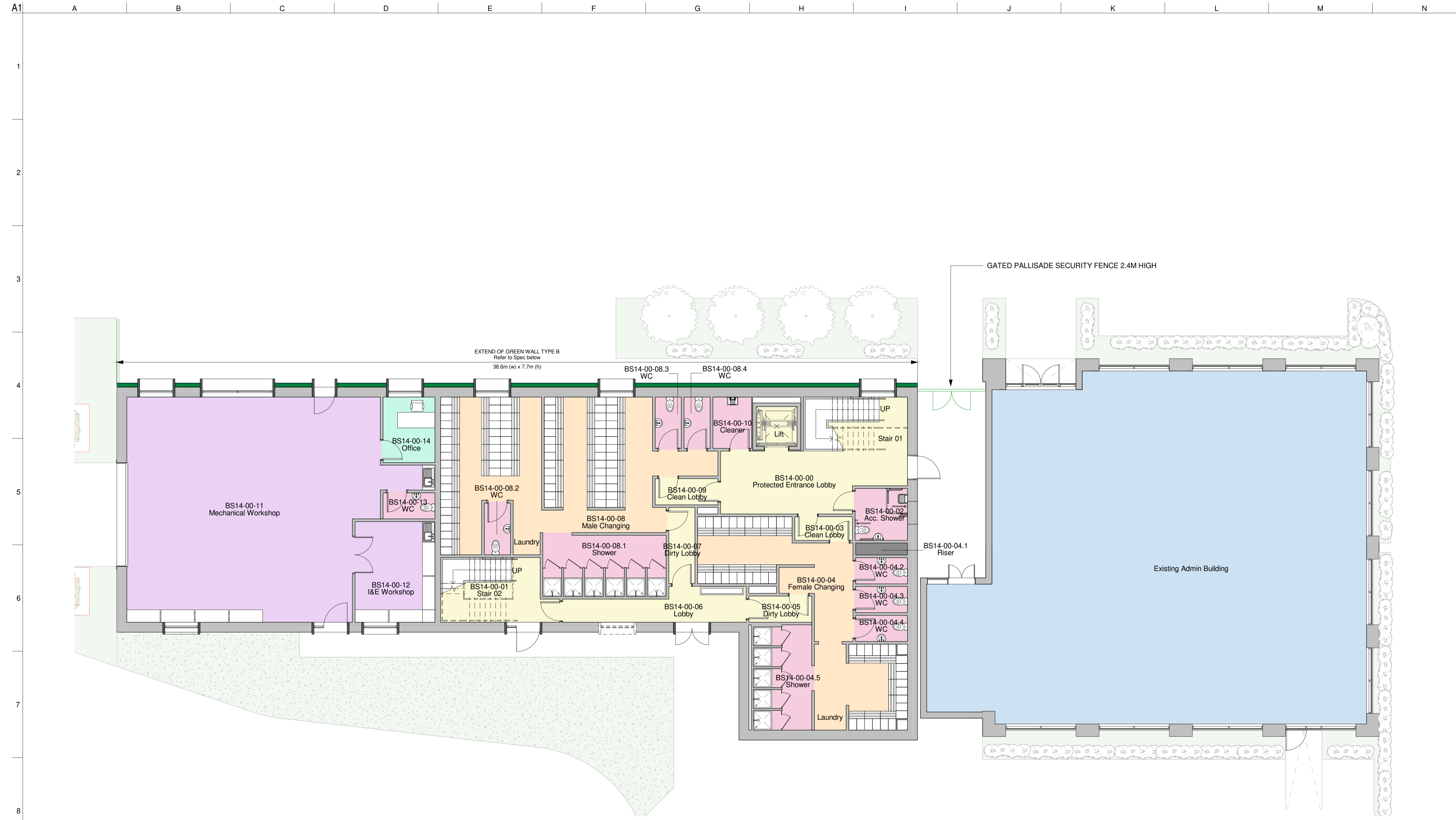
**Document Ref: 7.7.4 Condition 4 – Landscape and Planting Scheme  
– Staff Facilities & Workshop Ground Floor Plan**

The Planning Act 2008



**Applicant: SSE Slough Multifuel Limited**

May 2023 – Deadline 5



**Staff Facilities & Workshop Ground Floor Plan**

1 : 100

**GREEN WALL - TYPE B**  
ANS Group Global Modular Living Wall System or similar.

**Main planting mix:** - *Euonymus fortunei* 'Dart's Blanket'  
- *Hedera Helix* 'Wonder'  
- *Lonicera Nitida* 'Maignan'  
- *Phyllitis Scolopendrium*  
- *Vinca Minor* 'Gertrude Jekyll'

**Feature Planting:** - *Erysimum* 'Bowles's Mauve'  
- *Vinca Minor* 'Bowles Blue'

Planting mix is shown as illustrative and is subject to availability and further discussion with appointed living wall supplier

Copyright of this drawing is vested in the Architect and it must not be copied or reproduced without consent. Figured dimensions only are to be taken from this drawing. All contractors must visit the site and be responsible for taking and checking all dimensions relative to their work. Weedon Architects to be advised of any variation between drawings and site conditions. Refer and print in colour as required. IF IN DOUBT ASK  
DO NOT SCALE OFF THIS DRAWING

**DEPARTMENT LEGEND**

- Circulation
- Existing Offices
- Plant
- Process Personnel Areas
- Sanitary Accommodation
- Staff Facilities
- Workshop and Stores

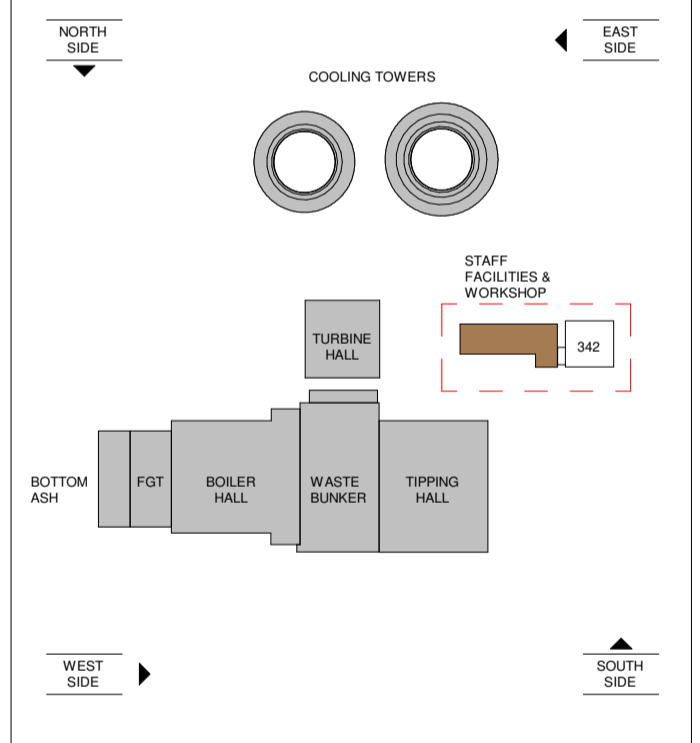
**LANDSCAPING LEGEND**

- Proposed Path
- Existing Grass
- Proposed Area of Bio-Diversity
- Proposed 2.4m High Pallisade Fence
- Existing Tree
- Existing Shrub
- Proposed Tree

PLANTROOM + RISERS INC. LIVING WALL IRRIGATION PLANT TO BE DEVELOPED AND INCORPORATED

Landscaping layout based on FIRA Drawing: VLA-FIRA\_50085001\_2.0\_Landscape Planting Plan

Which should be read in conjunction with:  
VLC-FIRA-50080001\_1.0\_SCHD Shrub Planting Q31  
VLC-FIRA-50080002\_1.0\_SCHD Specimen Trees Q31



0.000m = +32.300m (Assumed)



Discipline: Architectural Job No: 16136

Doc. No. FMFEL  
**VAA-WA-50081010\_3.0**  
Staff Facilities & Workshop GF Plan

Rev	Date	Drawn	Modified	Checked	Approved	Modification
3.0	30.06.20	JA	AMG	PJC		Landscaping updated as FIRA proposals
2.0	29.05.20	JA	AMG	PJC		Landscaping updated as FIRA proposals. Green Wall Identified
1.0	12.12.19	JA	AMG	PJC		ISSUED FOR PLANNING
0.0	21.11.19	SKM	AMG	PJC		ISSUED FOR PLANNING

General tolerances		Legend Part List	
DIN ISO 2768 - mK	HZI - Supplied by Hitachi Zosen AG	SP - Spare Part	WP - Wear Part
DIN 1585 - 1		PP - Purchased Part	
EN ISO 1352 - BF			
EN ISO 5817			
Suitability <b>S1</b>	Reservation of rights ISO 16016		
AIC	Copying of this document and give it to others and the use of communication of the content thereof are forbidden, without express authority. Offenders are liable to the payment of damages. All rights are reserved in the event of the grant of a patent or the registration of a utility model or design.		
Status <b>Planning</b>	Hitachi Zosen Inova AG		
Scale <b>As indicated</b>			
Size <b>A1</b>			

Project Name <b>Slough Multifuel</b>		
Staff Facilities & Workshop GF Plan		
Planning Drawing <b>BSGA</b>		
Project-Nr <b>P-3258</b>	Document No. <b>50081010</b>	Revision <b>3.0</b>
Replaced by:	Replaced for:	Sheet: 1/1

